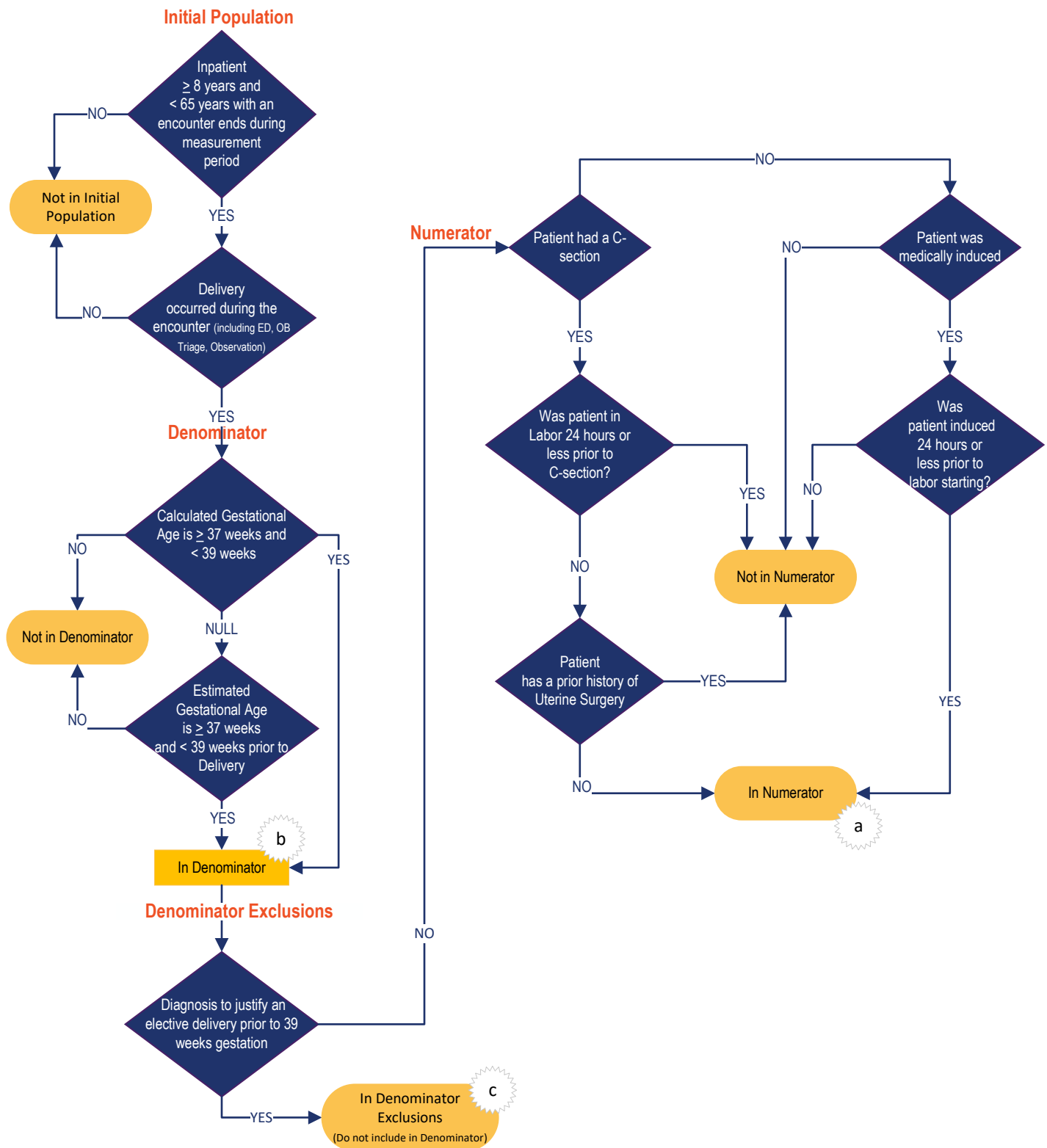


## Elective Delivery

Patients with elective vaginal deliveries or elective cesarean births at  $\geq 37$  and  $< 39$  weeks of gestation completed



### Sample Calculation

Performance Rate =  $\frac{\text{Numerator (a=9 patients)}}{\text{Denominator (b=100 patients) - Denominator Exclusions (c=10 patients)}} = 10\%$